

Snares catalogue

Catalogue 2012-2013



**CVL[®]
DRUMS**

www.cvl drums.com

Even in the catalogue CVL respects its own philosophy : A WHOLE OTHER STORY.

Not the usual catalogue but a tool to create a custom-made instrument ... step by step, trying to help drummers since the choice of wood until the finish, allowing them to be able to build what they want and what reflects their needs .

CVL is innovation, research and news ... completely Made in Italy.

The CVL research increases with Evo shell project, ibrid wood project e graphics project...



Preface pag. 3

Plied snares pag. 5

Types of wood pag. 6

Evo shell project pag. 7

Eco shell project pag. 7

Special edition snares pag. 8

Ibrid wood project pag. 9

Snares optionals pag. 10

Finishes and colours pag. 11

Special parts pag 19

Graphics project pag. 20

Lugs project pag. 21

Cases pag. 22

Merchandising pag. 23

Endorsers pag. 24

Contact pag. 26



THE
CVL
LEGNO

CVL Drums is a registered trademark

This catalogue is a CVL Legno Srl property - to copy or use this file is forbidden without specific written authorization





The best peculiarity of a CVL Drums product is the Product code, thanks to the international quality system ISO 9001.

woods, glues, varnishes must pass strictly tests when they arrive to CVL plant and they must respect several rules of conservation.

each CVL Drums product has a code inside all shells that needs to know all its story.

when the set is delivered, it will be accompanied by a certificate of originality and warranty that contains all info about wood, finishes, dimension and optional features.

Infact CVL Drums, during the building process, reports all working and features in a schedule with the same code inside the shells and after fills the customers certificate.

This allows to rebuild the story of single shell and set to give the traceability, to give the warranty (until 5 years) but in particular to offer to the customers the possibility to add new shells with not only the same finishes but also the same sound features thanks to the same wood selection, treatment and working.

TRACCIABILITA' PRODOTTO
Strumento prodotto e assemblato interamente in Italia

Grazie per aver scelto CVL Drums

CVL Drums, con il codice prodotto, è in grado di fornirti a distanza di tempo la possibilità di aggiungere nuovi tamburi al tuo set mantenendone le stesse caratteristiche, semplicemente comunicando il codice sotto riportato.

Questo codice, stampato all'interno dei tuoi tamburi, ne garantisce l'originalità, la qualità dei materiali usati, la cura nella costruzione e la garanzia.

codice FUSTO:

codice TAMBURI:

Settimani e giorni decorati:

COMPOSIZIONE SET

Tom Ø "x" h " spessore mm ... strati

Tom Ø "x" h " spessore mm ... strati

Tom Ø "x" h " spessore mm ... strati

From Ø "x" h " spessore mm ... strati

From Ø "x" h " spessore mm ... strati

Rullante Ø "x" h " spessore mm ... strati

Cassa Ø "x" h " spessore mm ... strati

PARTICOLARI:

CVL LEGNO s.r.l.
Via Industriale, 20/21
20133 Cinisello B (MI)
Tel. 02 490376
Fax 02 490376
info@cvllegno.com

Attestato con certificazione qualità ISO 9001

www.cvllegno.com
www.mysql.cvllegno.com
www.mysql.cvllegno.com
www.facebook.com/cvllegno

Data*
.....

CONTROLLO QUALITA'

* Validità garanzia

it is only necessary to communicate the certificate code or shell code of your set!

You could have two bass drums with different dimensions to use in more situations, with the same toms for example.

A great sample of quality, certified and of endurance that comes from CVL Drums...

CVL Drums is a registered trademark

This catalogue is a CVL Legno Srl property - to copy or use this file is forbidden without specific written authorization



CUSTOMIZE YOUR SNAPE

start the configuration of your own snares and choose:



Type of shell



Type of wood



Dimensions



Finish or custom finish



Optionals



Special customization

STUDIO

the custom SNAPE MADE IN ITALY



Do you want a custom plied wood snare? Choose the type of wood, dimensions, finishes and spare parts. It is possible to choose between all finishes CVL Drums

Also CVL snares are characterized by innovative sounds that come from CVL Drums technology and the best selection of woods.

Not just the sound, but CVL takes care of the sound until the last detail, like spare part mounting as the best tradition of the MADE IN ITALY products.

The attention to details allows CVL to ensure the top snare.

Diameter

| |
|-----|
| 10" |
| 12" |
| 13" |
| 14" |

Depth

| |
|------|
| 4" |
| 4,5" |
| 5" |
| 5,5" |
| 6" |
| 6,5" |
| 7" |
| 7,5" |
| 8" |
| 8,5" |
| 9" |
| 9,5" |
| 10" |

Thickness

| |
|--------|
| 5,4mm |
| Custom |

Basic 4,5 mm with reinforcement



- Chrome hardware
Black hardware
Bicolour hardware
- Big vent
Reinforcement rings
Shell with custom thickness
- Standard wires (16- 20 strand)
Brass wires (16- 20 strand)
Custom wires
- Standard snare switch
Dunnet snare switch
Triple regulation strainer
Trick strainer
- Double wires system
Free shell system without lugs
- Remo head CVL Drums marked
Evans head
- Single lugs double tension rods
Double lugs single tension rod
50% lugs
Carbon finished lugs
- Type of wood available: birch, ash, maple, african mahogany, chestnut, bubinga
Special wood or mixed wood shell
- 23 mm Triple flange hoops
Die cast hoops (14")
Beech or african mahogany hoops
Painted wooden hoops
- All CVL Drums finishes or custom colour



CvL follows all steps in working process, from selection of raw wood and wooden suppliers, until the last finishing of product.

A CvL drum kit born from the choice of the best tree, the best wooden layers with the best wooden veneer for each of the six essences used in CvL instruments. All this researches and works are done directly by CvL staff.

These wooden choices are important for the factory, because they allow to give the best instrument also to the most exigent drummer. CvL is continuously involving to find the best sound for the musician, to satisfy needs with a professional skill and competence.

The birch wood is a medium weight, strong, tough and elastic.

A drum kit made by birch is very well suited for recording studios, schools and in all situations where you need a controlled sound.

A type of wood with a good price. CVL birch sounds different from other birch in drum market, due to a innovative building process.

ABT series



BIRCH

The maple wood comes with straight and compact grain. It isn't a heavy wood, its specific weight is less than birch and it presents a good strength and elasticity.

A drum kit made by maple can be use into different musical performances, from jazz to metal rock, thanks to the great range of frequencies that it produces. Maple is the choice of those who claim a good attack and volume.

ACR series



MAPLE

The mahogany is a hard, medium-heavy wood with a fine texture and wavy grain, it has a high elasticity.

A mahogany drum kit gives a very good attack, a well-defined note with warm sound, rich in low frequency average. Thanks to its characteristic of elasticity and the wood fiber, the mahogany is full of harmonics, more than other types of wood used by CVL. If we can summarize in few words mahogany characteristics: it makes double sound and power.

AMG series



AFRICAN MAHOGANY

The ash wood has a straight grain with a texture from a medium to a coarse. It offers an excellent qualities of strength. Its specific weight is heavier than the birch.

A drum kit with this wood has the same characteristics of the birch, but more powerful and it is great on live performances.

AFR series



ASH

The chestnut is a medium heavy wood, its texture is similar to oak wood, but it not present wood window pane. The chestnut, as well as the oak, is used for wine staves and for the extraction of tannin.

The chestnut specific weight is placed between the Maple and the Bubinga.

The chestnut choice comes from a CVL's research to find a warmer sound than the maple one, with the same power and well-defined sound but with bass timbers more stronger. If you will try it, you will feel a magic influence due to unique attack and dynamics, never heard in the field of drum instruments.

ACT series



CHESTNUT

The Bubinga is a hard and heavy wood. It has a fine-grained, less porous, uniform texture and straight thread. Its specific weight is the highest compared to five other wooden essences used by CVL.

A Bubinga drum kit gives the top of timbers, as woods described above, but it gives more to the sound thanks to lower frequencies with a warmer sound, with an attack always well-defined and maximum flexibility in playing.

ABB series



BUBINGA



**T
J
P
S
S

O
F

J
R
O
O
F**

EVO SHELL PROJECT

Beech



- wood with a medium density and a sonorous timber that have medium high frequencies
- powerful and defined sound with controlled harmonics

sassofrasso



- Wood similar to Chestnut but lighter
- Sound with more bass than chestnut

Fir



- Soft wood that have more presence of harmonics than other wood.
- defined and controlled sound with great bass

Padouk



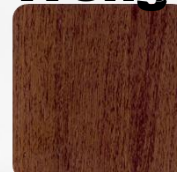
- medium soft wood with a warm sound and defined harmonics
- perfect for the acoustic use even if it is possible to use in live contest thanks to the "full-bodies" sound

Poplar



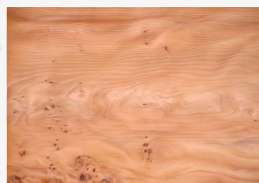
- Soft and light wood with a good control of medium lower frequencies but not so powerful so it is used jointed to other woods like mahogany or maple to achieve vintage sound
- Advised for drum band shells

Wenge'



- Hard wood with a linear fiber, great attack and opposite to the bubinga sound
- "cold" sound with a set sound and controlled harmonics. Defined sound and good powerful but also a high timber

Esotic



Contact CVL to create your shell: thickness, type of wood and type of shell or mixed woods shell to create the sound sewing to your request and needs.

The shell is the main part of drums

EVO SHELL PROJECT



CVL Drums warranties the provenience of woods used for its drums and it warranties the environment and re plant of wood plants.

CVL Drums starts this project to achieve the production of instruments with a lower environmental impact and to save the nature and plants, thinking to a future eco sustainable.

A project that continue using varnish and glue with small or none quantity of danger components.



CVL Drums

STEAMBENT SHELL

One piece of solid wood, that is worked thanks to the CVL technology to create a special shell. CVL takes care of veneer direction to build the shell and use a specific ageing time for the best wood selection. The result is a hot and powerful sound.



TYPE OF WOOD

Beech
Maple

Diameter

13"

14"

Thickness

10mm

Depth

4"

4,5"

5"

5,5"

6"

UNIQUE

The automotive technology applied to drums world. A shell that is incredible for its characteristic: hard and compact shell without joints. There are nothing like this shell in the world.

The sound is hard and clear with a great attack and power but controlled thanks to the innovative shell.



TYPE OF WOOD

Beech
Maple
Toulipier
African mahogany

Diameter

13"

14"

Thickness

15mm

Depth

4"

4,5"

5"

5,5"

6"

6,5"

SOLID STAVE SHELL

CVL solid snares are innovative made by wooden staves with a special joint system, that use a little glue quantity. Snare are well finished and rounded both internal and external surface made by the best wood selection.

A revolution in building shells, that leaves the wood to vibrate and to show all its power.

Solid wood snare gives a sound with great power and full of sonorous, with a good sensitivity in each type of beat. Clear and warm sound, in particular with wooden hoops



TYPE OF WOOD

Ash
African mahogany
Teack

Diameter

14"

Thickness

26mm

Depth

4"

4,5"

5"

5,5"

6"

6,5"



Aluwood

Aluwood is the most important result of CVL research. The shell is made with different plies of maple and aluminium joint together in a compact shell. The sound has the features of metal and warm sound of wood. A powerful and sensitive sound with a great rimshot but with also a great depth and sonours range.



TYPE OF WOOD

Maple + aluminium

Diameter

13"

14"

Thickness

8,4mm

Depth

4"

4,5"

5"

5,5"

6"

6,5"

Acrylicwood

Another shell, that coming from Ibrid project, is based on wood-acrylic mix, taking care to the joint between the two material and to have the most compact shell.

A "dry", powerful and controlled sound with a good tuning range.

The optional wooden hoops exalt the features of sound and the rimshot.



TYPE OF WOOD

Maple + acrylic

Ash + acrylic

Diameter

12"

13"

14"

Thickness

5,4mm

Depth

4,5"

5"

5,5"

6"

6,5"

7"

7,5"

8"



- Chrome hardware
Black hardware
Bicolour hardware
- Big vent
Reinforcement rings
Shell with custom thickness
- standard wires (16- 20 strand)
Brass wires (16- 20 strand)
Custom wires
- standard snare switch
Dunnet snare switch
Triple regulation strainer
Trick strainer
- Double wires system
- single lugs double tension rods
Double lugs single tension rod
50% lugs
Carbon finished lugs
- 23 mm Triple flange hoops
Die cast hoops (14")
Beech or african mahogany hoops
Painted wooden hoops
- All CvL Drums finishes or custom colour
- Remo head CvL Drums marked
Evans head



remo.com



DOUBLE WIRES SYSTEM



4 combinations to have 4 different snares.

The features of CVL snares joint to the double wires system with a wire under resonant and other under batter heads to obtain different sound for different situation. A snare that is not a common snare.

FREE SHELL SYSTEM

CVL Drums makes a snare series with the same conception of Jazz set above.

All six type of wood and no hardware or spare parts connected to shell of 5,4 mm thickness. Available only with wooden hoops.

Depth: from 4" to 7".

| Diameter | Depth |
|----------|-------|
| 10" | 4" |
| 12" | 4,5" |
| 13" | 5" |
| 14" | 5,5" |
| | 6" |
| | 6,5" |
| | 7" |



CVL has a long experience in lacquer/varnish process, this experience introduces the drummer into a world of infinite colours without any cover or wrap. CVL uses very elastic lacquer/varnish to leave the maximum vibration of the wood and to ensure the long life of the finishes.
A working-process made completely by hand by skilled workers, that are able to apply many thin layers of lacquer/varnish without defects, leaving the best smooth surface.

NATURAL LACQUER

A wide choice of shiny finishes and colours, especially designed to highlight the beauty of wood and wooden veneer.

Colours are tested for lasting, without any change in aging and the lacquer surface is studied to be shock-resistant. CVL paints are slightly different depending on the type of wood on which they are applied.

SPECIAL EXTERNAL WOOD

Particular and gifted external sheets of wood as the "zebrano" or painted woods worked with innovative techniques. These last wooden sheets are glued directly into the main moulding, looking to drawing of veneers. Available in lacquer or mat finish and with X veneers.

OPEN OR CLOSE POPE MAT

CVL presents the cheaper finish line called "satin-mat"!

This finish allows to see the wooden veneers or less, you can feel them with your hand on shell surface, and it makes special lighting effects.

SPECIALS

Special colours, like nacre/pearl or the chameleon, Even in this case, CVL doesn't use a cover, but only innovation and imagination ...

Special effects or varnish to create special finishes

SPARKLES

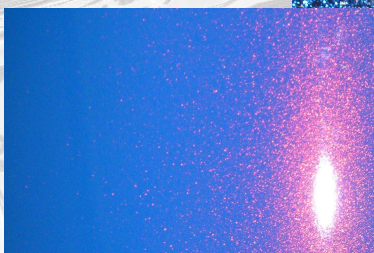
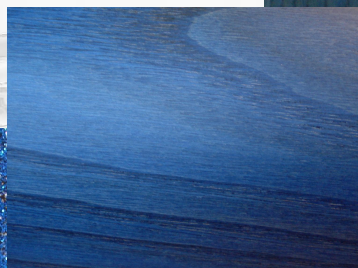
The maximum of customization allows to our customers to make also the choice of the grain of glitter for sparkles and their density. Not a cover, but a shiny sparkle varnished. CVL gives to customers many choices and also the chance to make colour experiments on new finishes, mixing together different sparkles. Now available also in mat finish

FRAYED

The glossy and mat versions are news introduced by CVL that allow the drummer to choose the colour of frayed to finish his custom kit. There are also many combinations of colours, keeping all the flexibility of wooden shell.

CUSTOM

Custom colours from your fantasy or your sample



CVL Drums is able to customize the colour of internal surface of drum: Trasparent/Black/White

In the next pages some ideas of finish. All mat and lacquer finishes are available also in lacquer and mat finish



finishes and colors

FINISHES AND COLOURS

Maple



AC 03



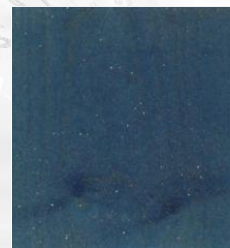
AC 04



AC 06



AC 07



AC 08



AC 14



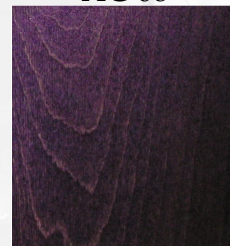
AC 21



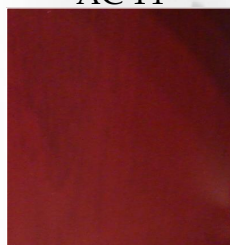
AC 22



AC 23



AC 25



AC 26

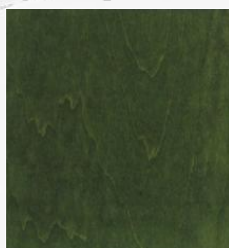
Birch



BE 04



BE 06



BE 08



BE 10



BE 21

Bubinga



BU 18



BU 21



BU 23



BU 24



BU 25 diamond

Chestnut



CA 06



CA 17



CA 18



CA 21



CA 24



FINISHES AND COLOURS

Ash



FR 03



FR 04



FR 06



FR 07



FR 08



FR 09



FR 14



FR 21

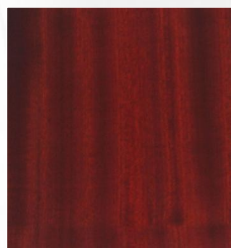


FR 22



FR 23

African mahogany



MO 06



MO 14



MO 18

Mat sparkle



MS 01

Indicative colours



FINISHES AND COLOURS

Sparkle



SP 02 fine grain



SP 03 coarse grain



SP 08



SP 10



SP 65



SP 30



SP 33



SP 34



SP 35



SP 36



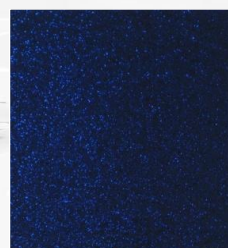
SP 39



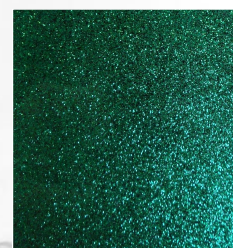
SP 46 gold silver



SP 42



SP 43



SP 40



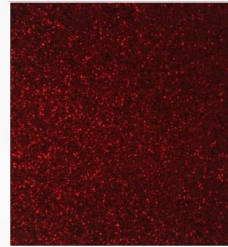
SP 54



SP 12 gree gold silver



SP 41



SP 45



SP 37



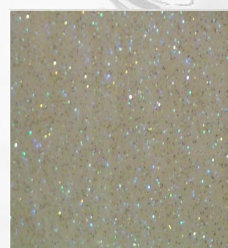
SP 47



SP 48



SP 49



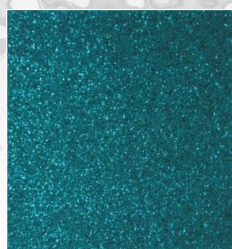
SP 50



SP 52 gold silver red



SP 44 fine grain



SP 38 coarse grain



SP 55 gold blue



SP 56 gold violet

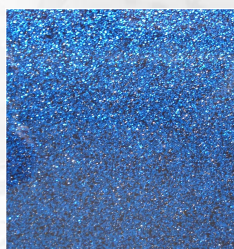


SP 62 silver blue

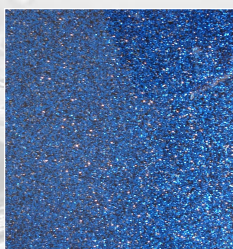


Indicative colours

FINISHES AND COLOURS



SP 60 blue silver



SP 59 blue gold silver



SP 61 blue gold



SP 57 black blue



SP 66 violet gold N



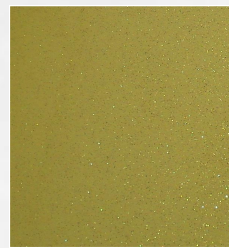
SP 70



SP 67 violet gold B



SP 69



SP 68



SP 73



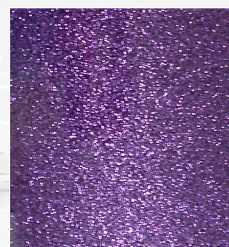
SP 58



SP 71

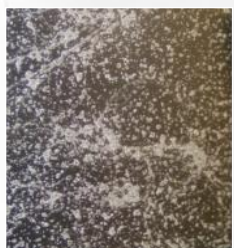


SP 72

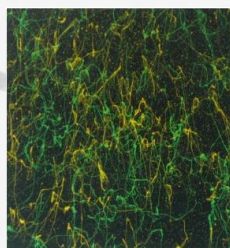


SP 74

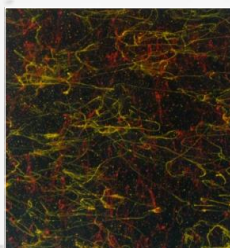
Frayed



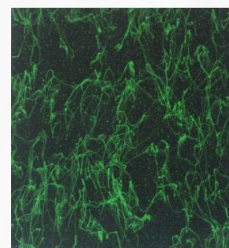
SF 20 mat



SF 25 mat



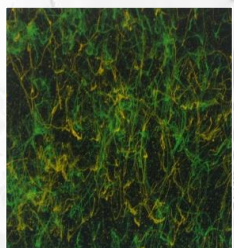
SF 26 mat



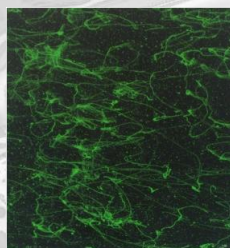
SF 27 mat



SF 28 mat



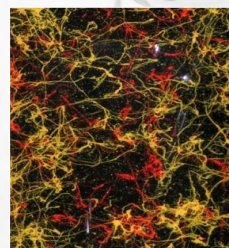
Sf 29 lacquer



SF 31 lacquer



SF 32 lacquer



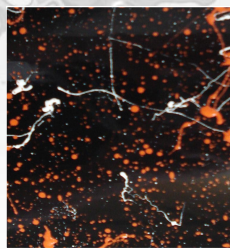
SF 34 lacquer



SF 36 mat



SF 37 mat



SF 38 mat



SF 39 mat

Indicative colours

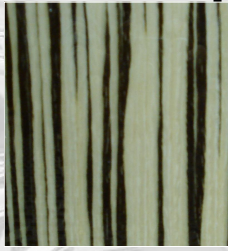


FINISHES AND COLOURS

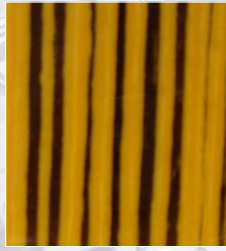
Special external wood



Sx 01



Sz 01



Sz 02



Sz 03



Sz 04



Sb 01



Sa 01

Mat special external wood



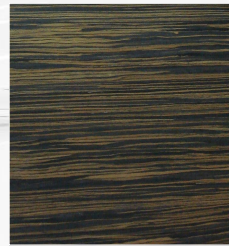
Sz 05



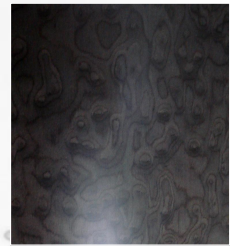
OP 11



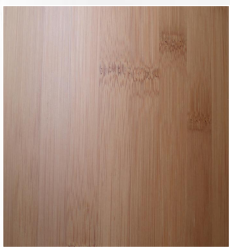
OP 13



Sz 06



So 02



Sb 02



So 03



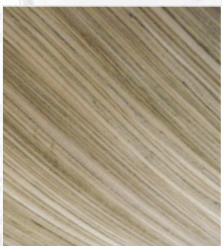
So 04



OP X1



So 05



OP X2



Sz 07

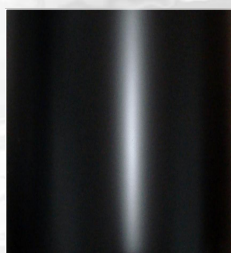
New X veneers

Indicative colours



FINISHES AND COLOURS

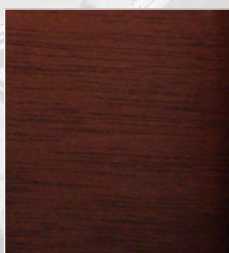
Mat



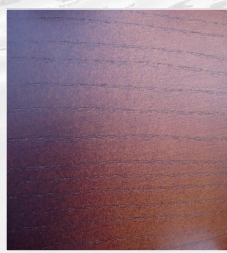
OP 07



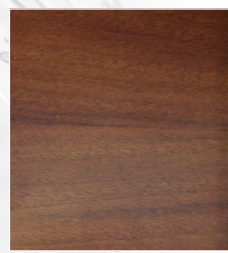
OP 01



OP 02



OP 08



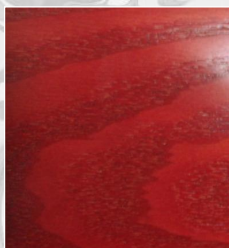
OP 10



OP 06



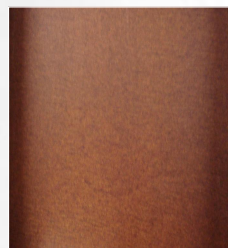
OP 03



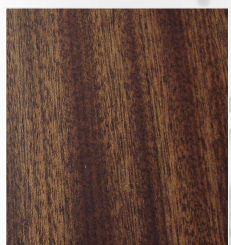
OP 04



OP 05



OP 09



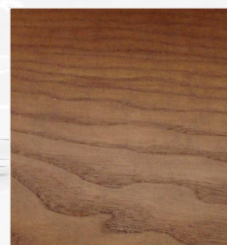
OP 17



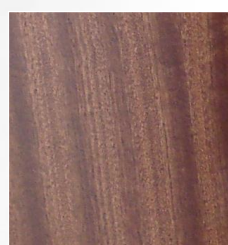
OP 12



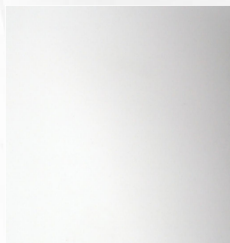
OP 15



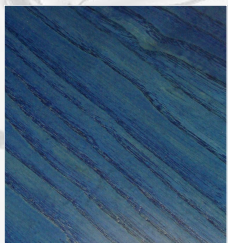
OP 24



OP 16



OP 14



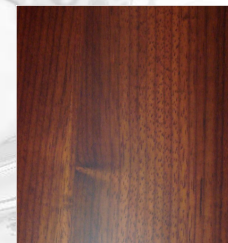
OP 18



OP 19



OP 25 wg



OP 23 pd



OP 25



OP 26



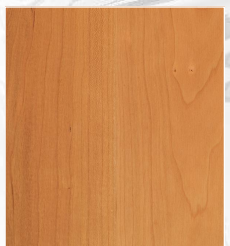
OP 22



OP 24



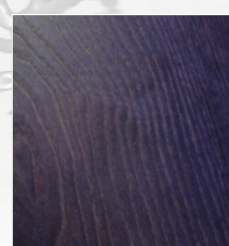
OP 21



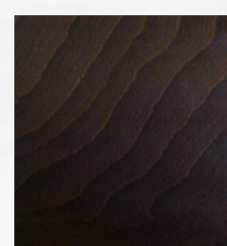
OP 27 cl



OP 28



OP 20



OP 29

Indicative colours

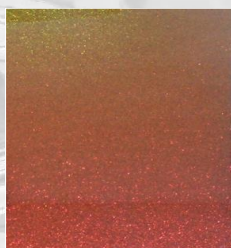


FINISHES AND COLOURS

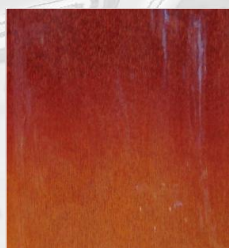
Specials



Sc 01



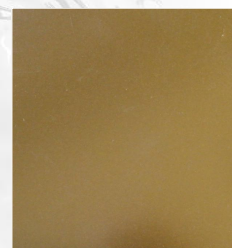
Sc 02



Ss 01



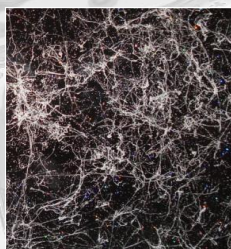
Sp 04



Sp 08 gold mirror



Sp 01



Sp 02



Sp 03



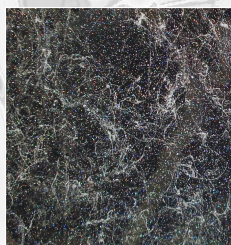
Ss 02



Ss 03



Sp 04



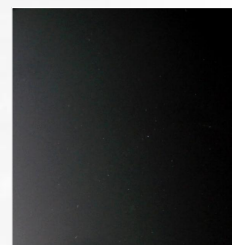
Sp 05



Sp 0A



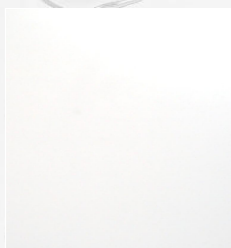
Sp 07 silver mirror



Sp 0B



Sp 00



Sp 0C



Sn 01 vintage



Sp 0D

Custom



Custom colour

Choose a finish and make changes or join two finishes
You can change all finishes with darker or lighter colours or different colours or use a lot of glitters or frayed colours.
If you don't see your colour, contact CVL that create the colour for you.
Our limit is your imagination...

Indicative colours



WOODEN HOOPS

One of CVL's top product! Taking advantage of the technology used in the automotive market, CVL has been created and designed wooden hoops that are characterized by hardness (sticks break before than the hoop) and the absence of splinters. This is a significant change in sound field, moreover CVL offers the chance of paint the wooden hoops looking to drummer taste to obtain the best from sound but also by the design. CVL assures the top care of hoop details, have a look to snare unit bed or ftom leg!

8"
10"
12"
13"
14"
16"
18"
20"
22"

SOUND

- Warm and full-bodied sonorous but also clearness and well definite sound
- Great rimshot response and sound power
- Less metallic sounds

Beech

African mahogany

Lacquer

mat

White

Black



CARBON FINISH LUGS



With CVL snare you can choose different shapes of carbon finished lugs.

CVL uses a technology to obtain a particular finishing like carbon fiber and maintain a polish surface.

This lug is available on long or shaped with double or single tension rod.

A detail that give you an aggressive look to your CVL snare.



Specialized

Are you searching the top of custom? CVL Drums develops the Graphics project to extend the custom drums concept.

Choose or create the subject and we re-create it in the wood with the fire and apply a natural lacquer or mat finish or we airbrush in the shell combined with all finishes.

CVL Drums allow to you to use your paint on your snare or drums set shells using different graphics method.

CUSTOM TATTOO



AEROGRAPHICS



Graphics project



CATALOGO 2012-2013

LOGS PROJECT



COMING SOON...



CVL Drums with Stefy Line partnership develops a semi hard case line to protect the CVL products and to give to its customers the best protection for the great CVL Drums quality.

Leather and tissue hand made in Italy and the Italian flag stamped, to remember the Made in Italy quality thanks also to the partnership choice.



Soft



Available with custom sizes for snare, drums set and percussion

soft line with tissue and leather and without internal protection

semi hard line with tissue and leather and with internal peluche protection 1 cm

Both line with pockets, shoulder bag and handle bag
Logo CVL Drums stamped and Logo Stefy line 3D

Semi-hard





BASIC T- SHIRT
MONOCHROME LOGO

COLOURS

WHITE
BLACK



PRO T- SHIRT

ITALIAN FLAG
BI CHROME LOGO

COLOURS

WHITE
BLACK



POLO

ITALIAN FLAG
BI CHROME EMBROIDERED
LOGO

COLOURS

WHITE



CAP

ITALIAN FLAG
BI CHROME EMBROIDERED
LOGO

COLOURS

WHITE



TOWEL

ITALIAN FLAG
BI CHROME EMBROIDERED
LOGO

COLOURS

WHITE



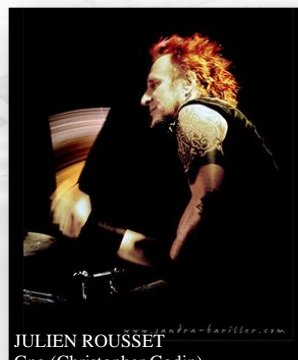
www.cvl drums.com



IAH SAZZAH
Roy pacy & Aretuska



ELE EDIANA
La fame di Camilla



JULIEN ROUSSET
Gno (Christopher Godin)



VAN PAOLINI
Marta sui tubi



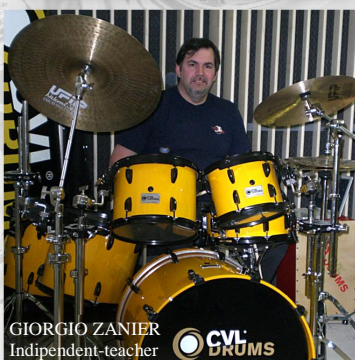
ROBERTO PERRONE
Edoardo Bennato-teacher



ANDREA FONTANA
Elisa
(end. Cajon CVL)



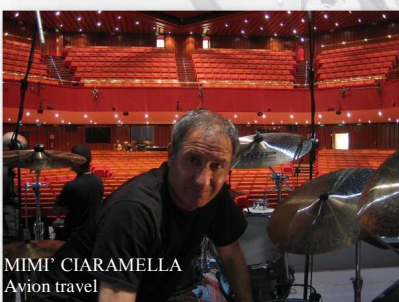
RINO CORRIERI
Caparezza-teacher



GIORGIO ZANIER
Independent-teacher



ALESSANDRO PATERNESI
Independent



MIMI CIARAMELLA
Avion travel



IGOR DEZZUTTO
Independent-teacher



ROBBY PELLATI
L'isabule



ADRIANO MOLINARI
Zucchero
(cassa 32")



FRANCESCO MENDICINI
Independent-Incognito-teacher



CISCO PORTONE
Independent - Concato



CLAUDIO DIRANI
Moda



YAN MAILLARD
Solid vision-Dominici



RICCARDO QUAGLIATO
Independent-teacher





GIANNI BRANCA
Independent-teacher



ALESSANDRO PIOVAN
Independent-teacher



ANDREA POLATO
Franco Battiato-
Independent



ALESSANDRO ATZORI
Independent



ALESSANDRO PELLE
Independent-teacher



STEFANO BERTOLOTTI
Independent-teacher



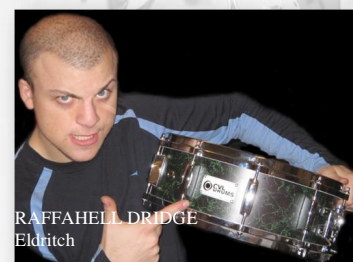
GIACOMO DE NICOLÒ
Independent-teacher



CARMINE RAIMONDI
Raimond orchestral-teacher



ELVIS FIOR
Independent-teacher



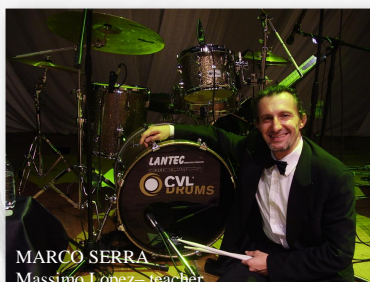
RAFFAELLI DRIDGE
Eldritch



LEANDRO BENFANTE
Independent-teacher



ERIC THOMAS
Independent-teacher



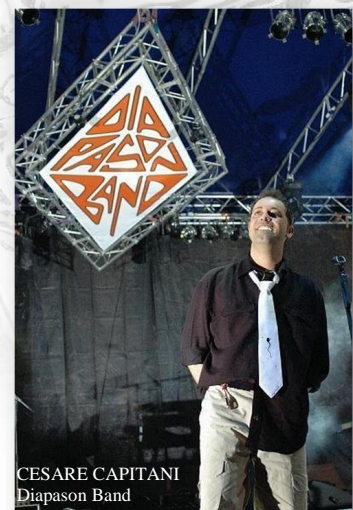
MARCO SERRA
Massimo Lopez-teacher



MARCO DI SALVIA
Node-Pino Scotto-teacher



DIEGO DE GRANDIS



CESARE CAPITANI
Diapason Band



TIZIANO BOSCOLO
Independent



STEFANO "Steve" BENNATI
Independent-teacher



CVL LEGNO srl
Zona Industriale, 38/B
30015 Chioggia (VE) ITALIA
Tel. +39 041 490099
Fax. +39 041 490396



www.myspace.com/cvldrums



www.youtube.com/DrumsVideo

www.facebook.com/cvldrums



www.twitter.com/cvldrums



www.cvl drums.com

CVL LEGNO

All people can have a brand, but a CVL product is yours, designed and build only for you with your sound and design to increase your capability and to exalt your features as drummer or percussionist.

**CVL[®]
DRUMS**



Made in Italy

Version 1.0